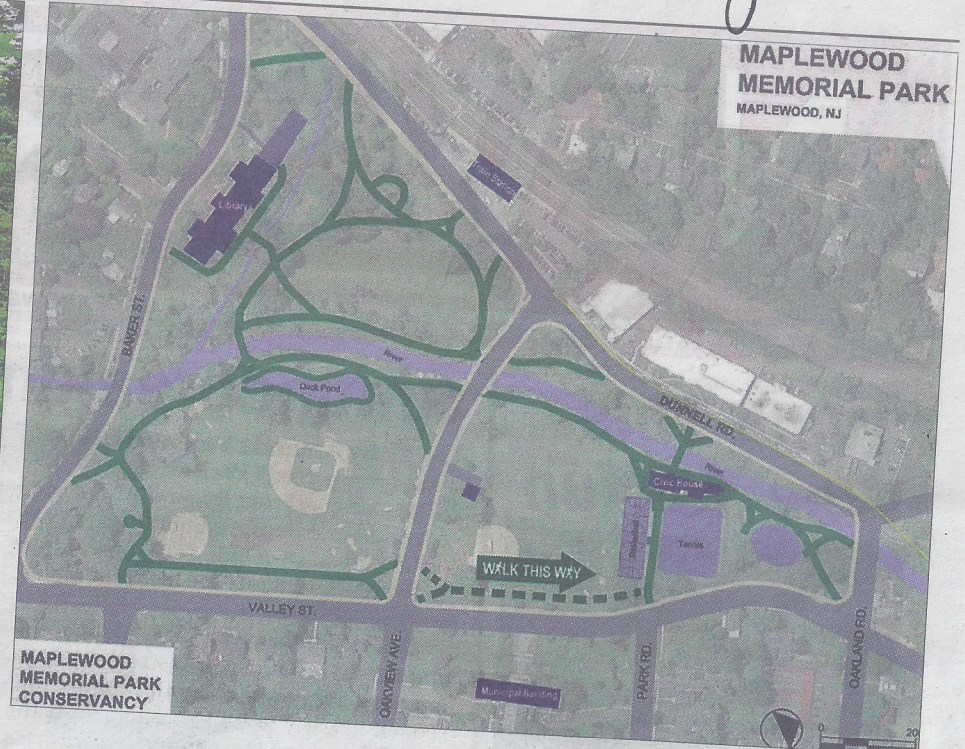


News Record of Maplewood - South Orange



Above left, a rendering of the proposed interior pathway in Maplewood Memorial Park. At right, a map shows Maplewood Memorial Park and plans for an interior pathway. The conservancy's aim with this proposed project is to restore landscaping originally intended to buffer the park from the busy roadway along Valley Street as well as to connect this area to the rest of the park's interior pathway system, allowing walkers, runners and field users to avoid the sidewalk.



Photos Courtesy of MMPC

'Walk This Way' a day of community fun and feedback

Join the Maplewood Memorial Park Conservancy for good times in Memorial Park on Field No. 1 at Oakview Avenue and Valley Street as the group combines family fun with community input on a proposed new interior pathway along Valley Street across from the municipal building.

Kite making, a scavenger hunt, bocce

and cornhole are among the planned activities on Saturday, Oct. 8, from 11 a.m. to 2 p.m., with a rain date of Sunday, Oct. 9.

A mock-up of the path/landscaping project and light refreshments will be available.

The conservancy's aim with this proposed project is to restore landscaping

originally intended to buffer the park from the busy roadway along Valley Street as well as to connect this area to the rest of the park's interior pathway system, allowing walkers, runners and field users to avoid the sidewalk.

Among the benefits MMPC hopes to achieve are to improve the experience of parkgoers of all ages by providing a safe

and pleasant place to walk; access to the ballfields, courts and playground; and seating to enjoy the beauty of the landscape, which will be enhanced by trees, shrubs and perennials.

For more information about the MMPC, contact info@maplewoodmemorialparkconservancy.org or visit maplewoodmemorialparkconservancy.org.