



ADMISSION IS
FREE

KID ZONE!

BEER GARDEN

FOOD VENDORS

LOCAL ARTISTS

MAPLE

WOOD

STOCK

MUSIC & ARTS FESTIVAL
JULY 12-13, 2025



www.maplewoodstock.com



If the city of Los Angeles had a soundtrack, it would be **Ozomatli**. Since their formation in 1995, the six-piece, multi-genre band has been a cultural force, blending Latin, hip-hop, funk, reggae, and global influences into an unmistakable sound that embodies the energy and diversity of LA. In 2025, Ozomatli celebrates an incredible milestone: 30 years of bringing their dynamic, genre-defying music to audiences around the world.

Emerging from the politically charged streets of Los Angeles, Ozomatli's origins are steeped in activism and a desire to unite communities through music. This ethos has carried the band across three decades, earning them a dedicated global following and accolades that include three GRAMMY® Awards, four iconic performances at the Hollywood Bowl, a TED Talk, and countless sold-out shows worldwide. From high-profile TV appearances on The Today Show, Jimmy Kimmel Live, and Austin City Limits, to groundbreaking tours in places like Burma and Mongolia, Ozomatli's music and message transcend borders, languages, and cultures.



The ensemble's six founding members—Asdru Sierra (vocals, trumpet), Raul Pacheco (vocals, guitars), Uli Bella (saxophone, vocals), Wil-Dog Abers (bass), Jiro Yamaguchi (percussion), and Justin Poree (vocals, percussion)—have remained true to their mantra: “We take you around the world through the heartbeat of Los Angeles”. Their music is a vibrant collision of styles, drawing from salsa, dancehall, cumbia, samba, funk, merengue, New Orleans second line, Jamaican reggae, and Indian raga. This eclecticism is at the heart of their sound, resonating with audiences of all ages and backgrounds.

Ozomatli's legacy extends far beyond their music. Known for their tireless community involvement, the band has used their platform to amplify causes that matter, from immigrant rights to education and beyond. Their ability to combine socially conscious lyrics with infectious grooves has made them a beacon of unity and resilience; a band that celebrates life while addressing the struggles that connect us all.

Their 30th anniversary is not just a celebration of longevity, but also a testament to their enduring relevance and innovation. With a career that began with their groundbreaking 1998 self-titled debut, they continue to evolve and inspire. Whether performing new material or beloved classics, Ozomatli's live shows remain a jubilant experience, igniting dance floors and uniting communities.

As they embark on their fourth decade, Ozomatli stands as a symbol of Los Angeles' past, present, and future—a band whose music is as multifaceted and vibrant as the city they call home. Here's to 30 years of Ozomatli, and the many more adventures yet to come. www.ozomatli.com

MARK
SLADE'S
REAL ESTATE
TEAM

KW
KELLER WILLIAMS®

MID-TOWN
REALTY
DIRECT

973.762.5400 | c 917.797.5059



Boston-based band **Couch** injects each project with their signature flavor: expressive horns, warm vocals, and bubbling synths—crafting an oasis of joy for musicians and non-musicians alike.

From their formation in 2019 until spring 2021, members of Couch were scattered across the country; they tackled the challenges of being a “long-distance band,” writing and even recording virtually. Despite these challenges, they celebrated the release of their debut EP, “COUCH”, in February 2021, as well as three singles and a 20-city headline tour in 2022.

In 2023, Couch released their sophomore EP, “Sunshower”, accompanied by a two-part 40-city US headline tour, performances at Boston Calling and Levitate, and a sold-out UK tour.

This past fall and winter, Couch opened for Cory Wong (Vulfpeck/Fearless Flyers) on his 38-city US and European tour.

Couch recently announced their largest headline shows yet, including stops in Boston (Roadrunner), New York (Brooklyn Steel), and Washington D.C. (9:30 Club).

“Couch is kicking it old-school with a delightful modern twist...[They] are single – or seven-handedly – breathing new life into the pop music scene.”

- Sheesh Media

Fusion seems to be a key word for Couch. Influenced by artists from Paul McCartney and Buddy Rich to Charlie Puth and Bruno Mars, Couch’s unique music brings together instruments as different as bass guitar and saxophone to blur the lines between genres...”

- The Harvard Crimson

www.couchtheband.com



Sweetsp::t DISPENSARY

VISIT US

751 Irvington Ave,
Maplewood, NJ
07040

For use only by adults 21 or older.

FIND YOUR SWEETSPOT

★★★★★

*Beautiful dispensary,
great staff, and
quality products.*

Sade L.

★★★★★

*Incredible vibe
and extremely
attentive*

Michael G.

★★★★★

*Great locally-owned
dispensary!*

Alexis C.

★★★★★

*Can't wait to
go back!*

Aaron C.

THE BIG TAKEOVER



Traditionalists or progressives? Fronted by the charismatic Jamaican-born singer and songwriter **NeeNee Rushie**, the seven-piece New York band **The Big Takeover** plays original music that is rooted in and reverent toward the genres and rhythms of Jamaican pop: reggae, rocksteady, ska. They are devotees of Desmond Dekker and the way the old school did it. At the same time, The Big Takeover crosses lines and blends traditions like global pop fusionists. Their deceptively complex arrangements and big hooks connect with the spirit of Motown and the uptown sophistication of the 21st century retro soul and R&B revival scene.

That rich sound, along with their rigorous performing schedule and studio work, has been paying off. In 2018, the Big Takeover completed a successful 12-state tour. They were enthusiastically received by 10,000 at Omaha's Jazz on the Green festival. They delivered an outrageously infectious and nuanced acoustic performance on the popular reggae-centric Sugarshack Sessions. Meanwhile, their current standalone single "Rainboots" has scored big with the discerning tastes at National Public Radio. The Big Takeover has appeared live in studio on several NPR stations, while "Rainboots" is in rotation on all of them.

"Led by the powerhouse, Jamaican-born singer and songwriter NeeNee Rushie, The Big Takeover's horn-powered global blend reveals deep fluency in reggae and world music, hints of soul and Motown, and their own infectious brand of pop classicism." — John Burdick

www.bigtakeoverband.com



GET YOUR IRISH UP!



Irish Bar Open 7 Days • 11:30AM - Wee Hours
Kitchen Open 7 Days • 11:30AM - 10pm
Weekend Brunch: 11AM - 3PM

167 Maplewood Avenue • 973.378.2222



Acupuncture | Herbal Medicine | Body Therapy | Nutrition & Lifestyle Consultation



Millburn, New Jersey 917-210-1063 Midtown, New York City
www.sevenpointwellness.com

*Introducing Your New
Favorite Italian Restaurant*

felina STEAK
SOUTH ORANGE

Open Tuesday - Sunday: Lunch, Brunch + Dinner
Restaurant + Bar + Private Events + Weddings

felinasteak.com

@felinarestaurants @eventsatfelinaso

101 S Orange Ave. South Orange, NJ



**World-Class Repairs
and Adjustments for
All Instruments
with Strings**

**FINLAY +
GAGE**

MUSICAL
INSTRUMENTS

113 CHAMBERS STREET NYC
1677 SPRINGFIELD AVE MPLW
WWW.FINLAYANDGAGE.COM

STRATOCASTER +
S...CASTER
+ ...ES PAUL +
...MARTIN +
MAGGINI + BREE...VE
+ BERGONZI + D'ANGELICO

PERFORMANCES



SATURDAY JULY 12TH

- NOON • Maplewood Glee Club**
A beloved men's chorus known for its humor and harmony, MGC has been a MAPSO staple for nearly 80 years, performing everything from the Beatles to Bruce.
- 12:45 • Becky Crosby**
A pop rock artist based in NYC, is backed by a group of exceptionally talented musicians. Crosby's compositions possess a distinct and eclectic blend of genres.
- 1:30 • Ballistic Berry**
A dynamic quartet hailing from Asbury Park. The band blends vintage vibes with a contemporary twist, creating a sound that resonates across generations.
- 2:15 • Paper Money**
A mix of 90s rock and punk, with a modern twist. The songs are fun and catchy, balanced with lyrical themes that juxtapose nostalgia, sarcasm and existentialism.
- 3:00 • Gina Royale**
A Jersey-born alt-pop singer-songwriter known for her ability to fuse mainstream pop sensibilities with elements of rock & alternative music.
- 3:45 • Laredo**
Longtime Maplewood and South Orange residents with special guests, who bring their cover versions of songs from Croce to Carlile and Dylan to Dawes.

- 4:30 • Mother Hubbard**
A unique funk-rock group hailing from Northern New Jersey, captivating listeners with their unique sound that is somewhere between the Red Hot Chili Peppers and Steely Dan.
- 5:15 • Sarah Hodd + The Drive**
An 8-piece powerhouse, playing explosive covers and bluesy originals. It's neo-soul meets rock n roll!!! All driven by electric vocals and a rocking band.
- 6:00 • Water Street**
A new version of Indie-Rock, mixing acoustic melodies with rugged rock and roll bursts, enticing sax riffs, a driving rhythm section & some hints of funk.
- 7:15 • The Big Takeover**
Led by the powerhouse Jamaican-born singer and songwriter **NeeNee Rushie**, The Big Takeover's horn-powered global blend reveals deep fluency in reggae and world music, hints of soul and Motown, and their own infectious brand of pop classicism.
- 8:30 • Couch**
Boston-based band Couch injects each project with their signature flavor: expressive horns, warm vocals, and bubbling synths—crafting an oasis of joy for musicians and non-musicians alike.

Introducing  **Millburn Ave Value Cars**
More Value for Less.

Proud Sponsor of Maplewoodstock Music and Art Festival.

We bring you top-tier pre-owned models, selected to provide you with luxury, performance, and reliability—all at an affordable price.


Let us buy your car no purchase required. Visit Millburn Ave Value Cars today and let us make you our best offer!



Millburn Ave Value Cars

2178 Millburn Avenue, Maplewood, NJ 07040

Phone: 973.821.2031 | MillburnAveValueCars.com

 **Audi Millburn**

Proud Sponsor of Maplewoodstock Music and Art Festival.

Audi Certified pre-owned – TARIFF EXEMPT!

Designed. Tested. Backed by expertise.

Why Buy Audi Millburn Certified Pre-Owned?

Audi Certified pre-owned Limited Warranty

- Start your journey with confidence. Comprehensive Dealer Inspection and Certification 24-Hour Roadside Assistance for One Year.

- We'll be there for you if you need it. Vehicle History Report

- Know your Audi through and through. Test Drive yours today!



Visit us at 2211 Millburn Avenue, Maplewood, NJ 07040

Phone: 973.862.8500 | audimillburn.com

PERFORMANCES

SUNDAY JULY 13TH

NOON • Cold Hill

A big sound, original Rock and Roll Band. With Rock as their backbone, other influences of styles breaking through include Bluegrass, Funk, Reggae and Jam Band.

12:45 • Roe Knows Best

A pop-punk band, indelibly New Jersey in sound, style, and attitude. The lyrical themes of Roe Knows Best songs speak about love, anxiety, and loneliness.

1:30 • Cheer Up Dusty

They deliver high energy, hook-filled pop punk with authentic lyrics alongside a Philly edge. Perfect for fans of Blink-182, Sum 41, and The Wonder Years.

2:15 • The Penniless Loafers

Ska that rocks. Brass that booms. Guitars that shred. The Penniless Loafers keep Jersey City & NYC dancing with high-energy, horn-driven grooves.

3:00 • The Hip Snacks

A Denver-based six-piece powerhouse of explosive soul music. For fans of Tedeschi Trucks Band, Bonnie Raitt, Allman Brothers.

3:45 • Essex Funk Collective

A local, multi-generational group playing soul, disco, R&B and funk grooves.

4:30 • Norbert Leo Butz

A two time Tony Award winning actor of stage, film and television, Norbert Leo Butz is also a singer/songwriter, combining elements of rock, soul, and folk with confessional lyrics.

5:15 • Reina Williams + The Remedy

A blend of reggae, hip-hop, and soul into a high-vibe experience. From smooth flows to infectious rhythms, they bring a fresh sound that moves the crowd.

6:00 • simmerr

An infusion of bedrock 80s soul with indie-rock, a carefree yacht rock energy, and Latin jazz rhythms, to put an irresistible smile on the faces of audiences.

6:45 • Annie Minogue Band

The band's driving and energizing sound, which combines a gutsy rock attitude, great pop sensibility with a hint of the blues, is reminiscent of rock's greatest female icons.

7:45 • Ozomatli

Ozomatli has spent 30 years uniting communities through music, earning three GRAMMY® Awards. They continue to inspire and move hearts, minds and dance floors across the globe.



Audi Millburn

Proud Sponsor of Maplewoodstock Music and Art Festival.

Premier Maintenance. Exceptional value.

Keep your Audi in optimal performing condition by maintaining a regular service schedule with the Audi Millburn Service Center.

Service Specials:

- 1) 15% Off Service*
- 2) Complimentary Alignment & Tire Tread Check



Visit us at 2211 Millburn Avenue, Maplewood, NJ 07040
Phone: 973.862.8500 | Schedule your next service online: audimillburn.com

Offer expires 8/31/2025. Up to \$300. Coupon has no cash value. Must present coupon at time of service. May not be combined with any other coupon. Other restrictions may apply.

Audi Millburn

Experience the Audi Q6 e-tron® at Audi Millburn.

When you are behind the wheel of the Audi Q6 e-tron® there is no purer form of luxury and style than the Audi e-tron lineup. Harnessing the latest technology for day-to-day functionality without sacrificing performance, this lineup not only elevates your drive — it electrifies it.

Contact Audi Millburn today to find out how exciting driving an electrified Audi e-tron® can be.

Visit us at 2211 Millburn Avenue, Maplewood, NJ 07040
Phone: 973.862.8500 | audimillburn.com

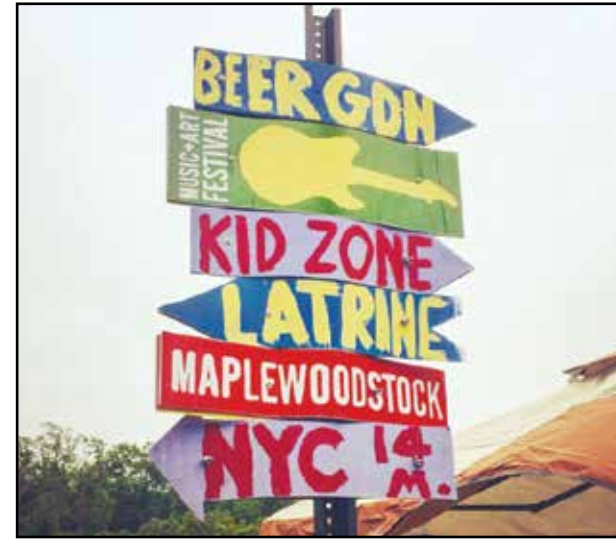


MAPLEWOODSTOCK 2025



KIDZONE

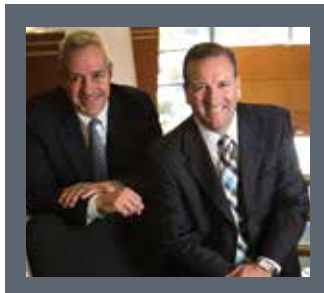
**BOUNCY FUN, GAMES, FACE PAINTING & MORE.
TICKETS AVAILABLE FOR PURCHASE ON SITE.**



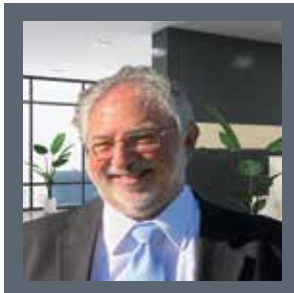
COUTO DEFRANCO

YOUR LOCAL CPA FIRM

60+ Combined years of experience, working together to serve the SOMA area!



Nelson Couto, CPA, CFP® and Anthony DeFranco, CPA, CFP®, MS (Taxation) — Partners: Couto DeFranco, P.A.



Marco DeLuca, CPA

Call us today to set up a complimentary consultation for all your tax and accounting needs.

COUTO DEFRANCO, P.A.
CERTIFIED PUBLIC ACCOUNTANTS & ADVISORS



**THE HOUSE OF HEALING IS YOUR PRIMARY
DESTINATION TO POTENTIAL RESULTS**



**WHAT IS IMPORTANT TO YOU?
WHAT IS YOUR FITNESS GOAL?
WHAT RESULTS ARE YOU LOOKING FOR?**



- LOSE WEIGHT
- INCREASE ENERGY
- STRENGTHEN MUSCLES
- BE MORE FOCUSED
- BE MORE CONFIDENT
- IT'S A LIFESTYLE

1933 SPRINGFIELD AVE • CKO MAPLEWOOD • 973-996-8779
CKOKICKBOXING.COM/NJ-MAPLEWOOD • GEORGE@CKOMAPLEWOOD.COM



CLARUS MAPLEWOOD — RESIDENT LOUNGE



CLARUS MAPLEWOOD — MAPLEWOOD, NJ

WE ARE PROUD TO SUPPORT THE MAPLEWOOD ROTARY & THE INVALUABLE CONTRIBUTIONS THEY MAKE TO THE COMMUNITY.



DEVELOPING MORE THAN JUST REAL ESTATE

As one of the most active redevelopers in the state, JMF transforms underutilized properties to create better places to live, work and play.

JMFProperties.com · Main Office: (973) 451-0111

Rentals: (855) 4LIV-WEL

C F M T G O X N C G I R S M U S O Q
 F S T L W F Z S N A P I A C A I F F
 G R Z M X E A K B M U E G L J C E A
 X V I Z N L N M R A K F A V Y T M Z
 H C R E I E Q T I P N A R C F W T U
 A E A E N W T K I L I D T R E T K C
 K F Z K I D Z O N E Y T S C Z N E H
 N A C L O A S A N W T H U U C G H D
 E K X O P E N C A O K H N C E E L S
 L W F C M A R D P O E O S F U N R H
 Z Y E A T M E E E D A T H I O I R E
 L W S L E I U C A N O P I E S P A Y
 S I E E C S I N G I N G N L X S C M
 T C R D I O O U I O L E E K C U R E
 H A K Y I M M A I T S H I R T S E C
 E O I C E C R E A M Y I Z S S K Z Y
 G S S L M E M O R I A L P A R K Y Y
 A X I I E C Q R C A E Z E E O X E M

WORD SEARCH

- MEMORIALPARK
- TWENTIETH
- ARTS
- BANDS
- CANOPIES
- COMMUNITY
- FAMILY
- FOOD
- FRIENDS
- FUN
- ICECREAM
- KIDZONE
- LEMONADE
- LOCAL
- MAPLEWOOD
- PEACE
- SINGING
- SUNSHINE
- TSHIRTS
- WELCOME

ABOUT OUR SUPPORTING ORGANIZATION



Music & Arts Education Project, Inc. (MAEP) is a SOMA-based 501(c)(3) nonprofit dedicated to advocating for comprehensive music and arts education for all students, in all grades, across all schools. We believe in the transformative power of the arts, from fostering cognitive and social-emotional development to championing equitable access to arts instruction. MAEP not only advocates for policy change and funding but also provides direct support to arts educators and students. We are proud to produce Maplewoodstock as our flagship annual event while also expanding our efforts to ensure that every child has access to a robust arts education.

Since our formation, MAEP has made a tangible impact in response to years of budget cuts. We have provided thousands of dollars' worth of essential art and music supplies to every elementary school in the South Orange & Maplewood School District and recently donated over \$12,000

in supplies for K-8 programs. Our contributions—ranging from violin strings and woodwind reeds to construction paper and air-dry clay—have empowered teachers to bring their creative visions to life. We are also actively working to address purchasing inefficiencies in school supply procurement to ensure that resources are allocated as effectively as possible.

We need your help to continue this vital work. Your support—through donations, advocacy, and volunteerism—ensures that the arts remain a vibrant part of our schools. To learn more and contribute, please visit <https://www.musicartseducationproject.org>



Chutzpah.

Because someone's gotta have it.

@chutzpah_kitchen

- 175 Maplewood Ave. Maplewood N.J.
- 138 E. Broad St. Westfield N.J.

chutzpahkitchen.com



WOOLLEY FUEL IS PROUD TO SUPPORT MAPLEWOODSTOCK!

Come rock with us at Maplewoodstock – the highlight of the summer! As a local, family-owned business for 100 years, Woolley Fuel knows the value of keeping the community warm in the winter and cool in the summer – and now we're here to help you chill while bringing the cool vibes to fun!

- Stay cool this summer – and cozy next winter – with reliable fuel and expert heating & cooling service from Woolley Fuel.
- Stop by our booth to say hi, grab some cool swag, and learn how we've been keeping the community comfortable since 1924.
- Proud to be part of the Maplewood community for a century – and excited to celebrate with you!

Visit woolleyfuel.com to learn more or schedule a service.



WOOLLEY FUEL — KEEPING MAPLEWOOD COMFORTABLE SINCE 1924

20 UNDER 20 ART GALLERY



For the first time, Maplewoodstock will be presenting a shaded art gallery of 20 young, local artists under 20 years old! This is an endeavor to encourage the younger burgeoning artists in our community to pursue their passions, display their work in a non-commercial, no-pressure setting, and continue to find ways to elevate the Arts aspect for our 20th Festival – “OF and FOR the community.”

The artists have been juried by a small group of local folks, long-time involved in various ways within the MAPSO arts scene. Within our 20 Under 20 Art Gallery, you might find painting, photography, sculpture, fabrics, and multi-medium creations to view and contemplate.



**SAVINGS RATES,
SERVICE AND
BENEFITS THAT
TOTALLY ROCK!**



DISCOVER THE CREDIT UNION DIFFERENCE

GardenSavings.org | (973) 576-2000 | 15 Scotland Road



Wondering *wtf* is for dinner? We've got you covered.

Olivia's
@letsgetolivias
www.letsgetolivias.com



Hard Work. Hustle. Happy Clients!

The Jill Sockwell Group is proud to be one of the sponsors of Maplewood's best events - Maplewoodstock!

If you're looking to Buy or Sell
#JustCallJill today at 917.657.8800!



Pamela "Jill" Sockwell
Real Estate Salesperson
M: 917.657.8800
O: 973.310.6816
jill.sockwell@compass.com
www.jillsockwell.com
The "j" and "s" in Jill Sockwell stand for Just Sold!

COMPASS

The Jill Sockwell Group are real estate salespersons affiliated with Compass. Compass is a licensed real estate broker and abides by equal housing opportunity laws.

DO YOU REMEMBER?

Maplewoodstock began in 2004 as an audacious idea by local musician and art supporter James Buchanan to gather several garage bands together and “put on a show!” in Memorial Park. Since then, Maplewoodstock has continued to grow and remains the best free, volunteer-driven, local festival of music and art in the tri-state area.

We hope that these pictures bring back fond memories of sitting with your friends and neighbors while taking in the shows.

“The first year of Maplewoodstock, 20+ years ago, I was underneath some janky wooden risers with rope and pliers trying to assemble a small stage and worried that it was all going to fall apart on my head. Heavens held; the stage held; and we pulled off an audacious event that continues to evolve 20+ years later.”
Jim Robertson



Jim Buchanan



2010 - Dumpstaphunk



2011 - The Smithereens



2004 - 3rd Gear



2005 - Felt



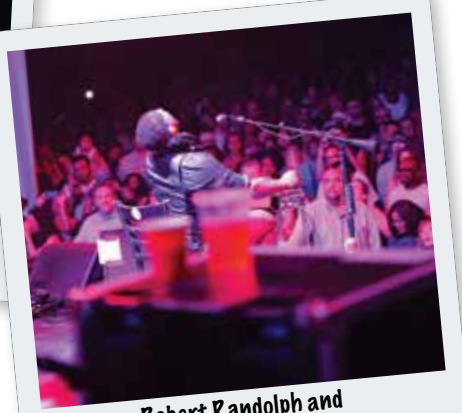
2006 - Code Black



2012 - Shemekia Copeland



2013 - Joan Osborne



2014 - Robert Randolph and the Family Band

“Our band played early at the first Maplewoodstock on a brutally hot afternoon. At that point, most of the eventual audience hadn’t shown up yet, and those who did were searching for some cool shade at the top of the hill. Only a few hearty souls braved the heat and came down close to the stage. Looking out at the audience that day, there was no way to have anticipated that that little DIY music festival would become the incredible must-see event it is now”
Mark Loughney, 3rd Gear, 2004



2007 - JJ Blues Band



2008 - New Day Dawn



2009 - Jonathan Edwards



2014 - Puss N Boots featuring Norah Jones



2014 - Stuff Bros



2015 - Rusted Root

"I was very involved with the origination of the festival. I provided stage logistics in the early years, supplying the sound systems, stage back line equipment, and know-how to put on the shows. In 2007, I was able to bring PA, lighting and a stage that my workplace - Sony Music Studios - had built for Guns N' Roses "Chinese Democracy" Tour rehearsals, to Maplewoodstock. After a couple of years of moving that back and forth to NYC, the stage manager told me to just keep it and it lived among the trees in Memorial Park for a while longer"

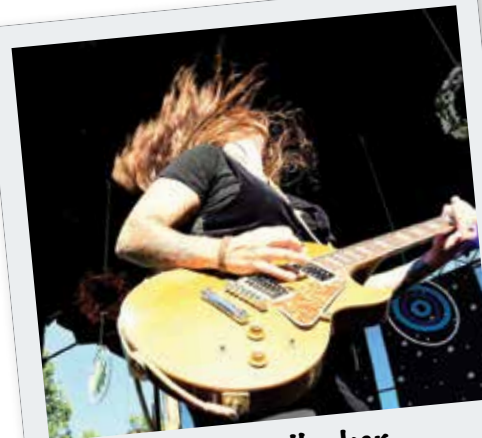
John Williams



2015 - The Wailers



2015 - Kwame Binea



2018 - Jane Lee Hooker



2022 - Galactic



2018 - Third World



2016 - Hula Hoop Lady



2016 - Lisa Rott



Gary Shippy - Every Year

"We wanted to create a concert in the park for local bands to perform for their friends and neighbors. And that's what we did."

Gary Shippy



2017 - Autumn Jones



2017 - The Hip Abduction



2019 - Antibalas



2022 - Alan Paul (Friends of The Brothers)



2023 - Sarah Hodd + The Drive



2017 - Ricky Persaud



2017 - Shakey Ground



2024 - Remember Jones



2024 - The Tia Holt Experience



SCAN HERE FOR MORE PHOTOS OR INFO



20TH ANNIVERSARY DONOR CIRCLE

Our motto has long been “a festival OF and FOR the community”. We THANK YOU for your support to keep Maplewoodstock the amazing free event that it is. Please consider donating at the QR code here.



\$1,000+ DONORS

Sally Chew
Walter & Isalys Joseph
The Jarashow Family
The Hargrave-Kerns Family
Danny Goldstein and Lisa Small

\$750+

The Tugentman Family Fund

\$500+

Gayle Shand & Mark Laughney
Paul Graves

\$250+

Al and Dot Kuehn
Arons and Arons, LLC
Beth & Paul Daugherty
Bromfeld Family
Dan Caplan
Dave & Malia Herman
Ed Maguire
General Store Shops & Cafe
Heather and Suki Real Estate Group
Hugh Snyder, MD
Jed Goldstein & Family
Jess & Daryl Frank & Fam
Mark and Laura Mucci
Rick, Jamaine & Alice Cripe
Santucci Family
Steve Ralff
The John Grzelewski Family
The Law Offices of Lloyd E. Bennett Esq., P.C.

\$100+

Aaron Meyerson, Amy Mignosi
Alex Oliver
Anna Winkler
Anne & Pat Dwyer
Brett, Henry, and Cora Stone
Bloom-Milne Family
Brooks & Daniela Wood
Bryn Cinque
Casey Holstein
Cate, Scott & Courtney Schoenborn
Christina Waldon
Claire Cohen
Cougar Soccer Club
Deborah & Jeff Levine
Ethan and Robin
Eve Levy
Glenn and Nancy
Greenberg/Wolpov Family
Harper & Cameron Higgins
Jackie Mesnik Adam Fechner
James & Beverly Shackley
Jamie & David Meier
Jenna Burniston
Jessica Winchell
Jill Holtzman
Jill Stillman
Joe Butcher
Katie Schneider
Kosik Brewing
Laura Hemans Brantley
Leelila Strogov
Lisa and Dennis Kearney
Lynn Lewis
Lynne & Ryan Hamilton
Mary Kate & Patrick Cahiwat

Matt and Jennifer Glass
Michèle & Bobby Hurley
Nancy & Pierre Gagnier
OT A-Team (Sheena Patel)
Penny Lane (Steven Hutchinson)
Rebecca Hartranft
Sarah + Rick Y.
Sarah J. Morrison
Schutz Family
Shabnam & Shabbir Irfani
Steve Robinson
Steven Feldman and Mutlu Bascillar
The Adler Family
The Althea Fund
The Ames Family
The Bigelow Family
The Bird-Guilbert Family
The Blaines
The Elder Care Project
The Garber Family
The Kelewae Family
The Lefferts family
The Levine Family
The Maitlin Family
The Marx/Madonna Family
The Mintz Family
The Moskowitz Family
The Robies
The Rumleys
The Saydah Family
The Stewart Family
The Tints
The Weinstein Family
The Wright Family
Wendy Donat

*All listed and included donors above were from prior to our print deadline, April 9. We are so grateful to all of our donors and supporters this year!

THANK YOU ALL FOR YOUR SUPPORT

THE HUNDREDS OF VOLUNTEERS WHO HAVE MADE MAPLEWOODSTOCK WORK FOR 20 YEARS

Township of Maplewood
Mayor Nancy Adams
Deputy Mayor Malia Herman
Maplewood Department of Public Works
Maplewood Police Department
South Essex Fire Department
South Orange Rescue Squad
Maplewood Memorial Park Conservancy
South Orange Elks
Jim Buchanan
Together We Bloom
Music & Arts Education Project
Jess Frank
Rachel Goldman

Adam Grzelewski
Brian McNamara
Alison Oxman
Steve Casella
Marwan El-Gabry
James Goodger
Ken Lagemann
Rick Davis, Jeff Rosolen, and 368 Event Management
Tom Carlson and Marcia Leonard
Michael Choi
and special thanks to Charlie McGuire who has volunteered his time and talent to create every program over the years

the good life
GROUP

Amy Paternite, Ben Garrison, Sara Brown
www.thegoodlifegroupnj.com

#1 Team Coldwell Banker Maplewood
145 Maplewood Avenue | Maplewood, NJ 07040

COLDWELL BANKER
REALTY

Living the Good Life
One Song at a Time
@maplewoodstock

Affiliated real estate agents are independent contractor sales associates, not employees. ©2025 Coldwell Banker. All Rights Reserved. The Coldwell Banker System fully supports the principles of the Fair Housing Act and the Equal Opportunity Act.



Now Accepting
New Patients



CONTACT US TODAY!

(973) 218-5834

RedwoodFamilyDentalNJ.com

bakes
BY  **IZZY**

www.bakesbyizzy.com

Small batch sweet treats
Custom cakes
and
gourmet gifts

Visit at:

108 West South Orange Ave.
Tuesday - Saturday 8:30-1:30



AERIAL FITNESS

ADULT GROUP FITNESS & YOGA CLASSES

PRIVATE TRAINING

KIDS 8-WEEK SESSIONS

KIDS CAMPS

PRIVATE PARTIES

PRIVATE TEAM BUILDING EVENTS

...AND SO MUCH MORE!

@AIRFITSOUTHORANGE | SOUTHORANGE@AIRFITNOW.COM | 15 VALLEY ST, SOUTH ORANGE

**THE CARY &
STACEY GREENBERG
FAMILY**

Proudly Support
Maplewoodstock 2025
& MAEP



Groove & Move With Us
We've got the beat on SOMA

Over 25 years of experience selling homes in Maplewood/South Orange



VICTORIA
CARTER
GROUP

973.220.3050

WWW.VICTORIACARTER.COM

T-SHIRTS

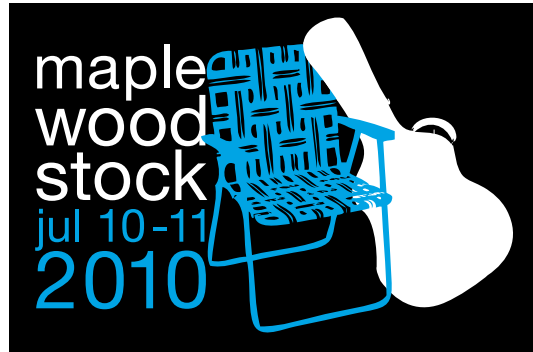
One of Maplewoodstock's long-standing traditions is the annual t-shirt. Every year since about year 3, there has been at least one new t-shirt design. Some years there are multiple designs or a special design for kids' shirts.

Over the years there have been contests to determine the design, students and local artists have created designs, and designs have been developed by the organizing committee. Regardless of the source of the design, the goal is to celebrate art, music, and our community.

Some of the designs from over the years are shown here, and include:

- A tribute to the amazing ash tree at the top of the hill
- A celebration of the tenth anniversary (MWSX)
- The year we turned the volume up to 11
- The lucky 13 year
- The limited edition empty stage t-shirt from 2020, designed after the decision was made to cancel Maplewoodstock due to Covid.

The question is – *how many do you have?*
 Take a selfie in your favorite Maplewoodstock t-shirt,
 post it on social media and tag #Maplewoodstock!



15 YEARS



MUSIC + ARTS FESTIVAL



JULY 14-15 2018



THE CORE PLACE
MAPLEWOOD

PILATES, TRX,
GYROTONIC®,
PRE & POST NATAL

GROUP 1 MONTH INTRO \$199
PRIVATE 3 SESSION INTRO \$240

CHECK US OUT



Private Training
Group Classes





Natalie Knows...

— what ~~moves~~ you —
Grooves



NATALIE FARRELL

CELL: 917 514-7541

OFFICE: 973 996-3674

SOLD@NATALIEFARRELL.COM

Weichert

REALTORS®

505 Millburn Avenue, Short Hills, NJ 07078



Information provided by Garden State Multiple Listing Service. It may include sales/listings not made by the named agent/agents or Weichert, Realtors®. Information deemed reliable, but not guaranteed. If your property is currently listed for sale with a real estate broker, this is not intended as a solicitation of that listing. (c) 2014 Weichert, Realtors. Each WEICHERT® franchised office is independently owned and operated. Weichert® is a federally registered trademark owned by Weichert Co. All other trademarks are the property of their respective owners. REALTOR® is a federally registered collective membership mark which identifies a real estate professional who is a Member of the NATIONAL ASSOCIATION OF REALTORS® and subscribes to its strict Code of Ethics.