

The Maplewood Leaflet

Winter 2022



Ribbon cutting at the Maplewood Community Fridge grand opening on November 13, 2021.

Community Fridge Now Open

The Maplewood Community Fridge is now up and running! Located on Springfield Avenue near Indiana Street, the Fridge functions as a partnership between Maplewood Township, Essex County, Township residents, and community groups.

Maplewood is grateful to all of our community partners for their continuous contributions and support. Your efforts in the fight against food insecurity are invaluable!

Donations to the Community Fridge are always

appreciated, and all are welcome to visit the Fridge and either give what they can or take what they need.

For more information on the Community Fridge, please reach out to the Community Services Department at (973) 762-8120.

Community Spotlight

Maplewood Awarded Neighborhood Preservation Grant for Springfield Avenue

The New Jersey Department of Community Affairs' Neighborhood Preservation Program (NPP) recently awarded Maplewood a 5-year grant for economic and community development in the Hilton Neighborhood/Springfield Avenue District.



The grant includes an initial \$125,000, with anticipated funding up to \$125,000 a year for a total of five years, and a robust array of technical assistance and training from the State's NPP Team to guide and empower this local effort.

The District eligible for NPP funding encompasses a portion of the Hilton Neighborhood and a portion of Springfield Avenue, connecting southeast to Burnett Avenue. The NPP's goals are to increase economic, civic and social value by enhancing buildings, streets and a district's entire physical realm, by supporting and coordinating small business growth, recovery, and sustainability, and by marketing district events and activities.

"The Springfield Avenue section [of this NPP District] is a growing pedestrian-focused district, gradually and steadily attracting

more businesses that serve residents and the surrounding local community. The Hilton Neighborhood is Maplewood's most diverse neighborhood, and known for its strong community activism and neighborhood pride," says Nicole Dooskin Wallace, Springfield Avenue Partnership Executive Director.

Engaging local stakeholders in planning and relationship building – including the Springfield Avenue Partnership (SAP) and the Hilton Neighborhood Association (HNA) – is a critical part of this process.



The state's NPP Team will work closely with both the SAP and HNA to support an array of bottom-up efforts to create visible and tangible change, leverage other public and private resources, and address real needs and aspirations of stakeholders.

Annette DePalma, the Township's Director of Community Development, who co-wrote the grant application with Wallace, believes *Continued on next page.*

Community Spotlight

the State's infusion of energy and money in awarding this grant both recognizes and rewards Springfield Avenue's tremendous evolution over the last 20 years, from a State roadway to a locally-controlled commercial and residential Special Improvement District.

"The funding and technical expertise from this grant will enable further innovative streetscape and "sense of place" improvements that will further elevate the vibrancy of this District. It's all about bringing commercial viability, ease of use, and pedestrian-friendly experiences to a new level," says DePalma.



The Township and Springfield Avenue Partnership, under Wallace's leadership, will create an Implementation Plan that combines significant community engagement, local knowledge, and hard data. The resulting Implementation Plan is an achievable and comprehensive set of projects and programs that address local needs and build on local assets in its NPP District. "We have tremendous human capital and community assets in this District," says Wallace. "I am looking forward to drawing from the pool of creativity and expertise of all our neighbors, and from the State's NPP Team. It's a very exciting time for Springfield Avenue."

We Want to Hear from YOU

Springfield Avenue Partnership and Maplewood Township are seeking feedback from people who live, work, shop and eat in Hilton Neighborhood/Springfield Avenue. The online survey will help determine the projects and priorities designed to invest public funds into the area, and boost economic growth.

As a thank you, anyone who completes the survey and provides their email address will automatically be entered into a contest to win one of five Springfield Avenue-themed gift baskets full of merchandise and gift cards.

Those interested in taking the survey can do so at <https://bit.ly/NPP-Survey>.

Are You Ready for Flu Season?

Flu season is now upon us, and getting your flu vaccine is a great way to keep yourself and your community safe. According to CDC estimates, the flu caused over 9 million illnesses, over 140,000 hospitalizations, and over 12,000 deaths between 2010 and 2020. Help stop the spread and get vaccinated today!

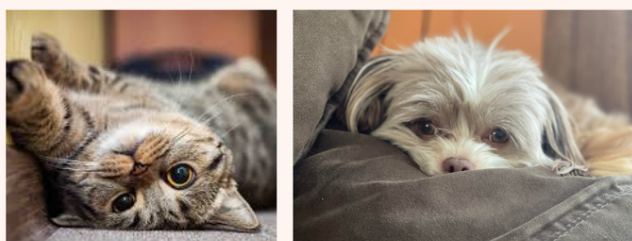


To find where to get a flu vaccine near you, visit: <https://www.nj211.org/get-flu-ready>.

Featured Articles

Pet Registration Deadline is 1/30

The annual dog and cat registration deadline is once again approaching. To avoid a \$7 late fee, be sure to register your furry friend with Maplewood's Health Department no later than January 30, 2022. Registration can be completed online at www.twp.maplewood.nj.us/animal-control or by calling the Health Department at (973) 762-8120.



LOVE YOUR PET? LICENSE THEM TODAY!

MAPLEWOOD TOWNSHIP ORDINANCE AND STATE REGULATIONS REQUIRES ANNUAL LICENSING OF ALL DOGS & CATS

Benefits of licensing your pet

- Ensures up to date rabies vaccination
- Identifies lost pets

**COST: \$15 FOR SPAYED/NEUTERED
\$18 FOR NON SPAYED/NEUTERED**

***A \$7 LATE FEE APPLIES FOR LICENSES REGISTERED AFTER JAN 30TH EACH YEAR**

To license your dog visit:

<https://www.twp.maplewood.nj.us/animal-control/pages/animal-licenses> or call 973-762-8120



Cold Weather Fire Safety Tips

As the weather gets colder, Maplewood's Fire Department would like to remind residents to practice fire safety. Most home heating fires involved portable heaters and space heaters, with gas and kerosene heaters accounting for the highest fatality

risk. However, all heating systems, including fireplaces, can be dangerous if not used or maintained properly. Maplewood Fire Department recommends the following tips for keeping residents safe this winter:

- Choose portable space heaters with auto-off safety features and a tip-over safety switch.
 - Give space heaters a minimum of 36in of space.
 - Never leave a fireplace or space heater unattended.
 - Protect your home from fireplace sparks by using a fire screen.
 - Only burn dry wood.
 - Dispose of ashes and hot embers in metal containers and away from combustibles.
 - Have your chimney inspected and cleaned by a professional before each heating season.
 - If you have a natural-gas fueled heater, check the vents regularly to ensure they are not blocked.
 - Inspect electric heater cords for damage prior to use.
 - Never store combustible materials near a furnace.
 - Make sure there is a working smoke detector on each floor of your home.
 - Check smoke detector batteries every six months and replace them every twelve months.
 - Develop a home fire safety plan.
-

Featured Articles

Be Part of the Energy Solution

As we move into the chilly temperatures of the winter season, what better time is there to make sure that your home is both comfortable and cost-effective to operate?

The Township of Maplewood, as Lead Agent for the Sustainable Essex Alliance (SEA), is pleased to announce "Energy Solutions," a pilot program that provides free, virtual home energy consultations to local households to help you save money and save energy.

Whether you need to seal leaky drafts, add insulation, upgrade heating and cooling equipment or even install a solar energy system, a specialist will work to identify solutions that make sense for you. There is no cost to get started and no obligation to undertake any of the recommended measures.

SEA has hired a consultant, SmartPower, to guide and assist pilot program participants in mapping out their energy saving journey and take advantage of any available rebates and incentives. This program is available at no cost to SEA residents.

Part of SmartPower's Virtual Energy Consultation involves working with

residents to review home and energy use information provided during the application process. From there, Consultants work to identify the most impactful energy saving measures to improve the comfort and efficiency of each home. Examples of the topics addressed include:

- Insulation
- Windows
- Appliances
- Heating and cooling equipment
- Hot water saving measures
- Solar power
- and more!

Those interested in participating in the Energy Solutions Program can visit www.SEAEnergySolutions.wee.green or call 1-833-425-SAVE (7283). to begin their application.

Please note that, because Energy Solutions is a pilot program, the number of participants is limited. However, SEA hopes that this program will ultimately lead to a full-scale residential energy efficiency outreach and energy-planning program available to all in our communities.



Featured Articles

Winter Heat and Home Weatherization Assistance

As winter approaches, Maplewood residents are advised of the following programs providing utility and home weatherization assistance:

Utilities Assistance - LIHEAP, USF, and New Jersey Lifeline

The Low Income Home Energy Assistance Program (LIHEAP) assists low-income residential customers who are struggling to pay their heating and/or cooling bills. Low-income residents whose heat is included as part of their rent are also eligible. The program also offers emergency assistance funds throughout the year.



The New Jersey Universal Service Fund (USF) was created by the New Jersey Board of Public Utilities (BPU) to increase energy bill affordability. Qualified residential customers can receive up to \$180 per month toward their gas and electric bills.

The New Jersey Lifeline for Seniors and Disabled Adults offers an annual \$225 electric or gas bill credit for New Jersey residents ages 65 and older, or ages 18 and older if receiving Social Security Title II Disability benefits.

More on these programs can be found at nj.pseg.com/saveenergyandmoney

Comfort Partners

BPU funds Comfort Partners as part of New Jersey's Clean Energy Program. Comfort Partners is administered through a partnership between BPU and New Jersey gas and electric public utilities. Through this program, qualified PSE&G residential customers are eligible for free energy saving services and education. To learn more, visit nj.pseg.com/comfortpartners.

Home Weatherization Program

The Home Weatherization Program provides free energy efficiency home assessments for qualifying moderate-income residents. Depending on the results of the assessment residents may also be eligible for up to \$6,000 in energy efficiency upgrades and \$1,500 in health and safety improvements. Additional information can be found at homeenergy.pseg.com/homeweatherization

Home Performance with ENERGY STAR®

Through the Home Performance program, all New Jersey Residents have the opportunity to lower their energy costs by up to 25%. Participants schedule home energy audits with participating contractors, who then make recommendations for energy efficient upgrades. Depending on audit results, households could qualify for up to \$5,000 in rebates for home energy upgrades, as well as a no-interest repayment program. To learn more, visit homeenergy.pseg.com/homeperformance.

Featured Articles

Upcoming Classes

The Maplewood Department of Community Services has several upcoming art and fitness classes:

Funky Fun Art Workshops at the Woodland include January 3rd Fairy Workshop, January 17 Model Magic Workshop, and February 21 Painting Workshop. Workshops are each available for grades 1-6 for \$125.00 per student per workshop.

MSO 2022 Travel Pre-Season Winter Workouts: Dust off your glove, and stay sharp. Come run through a variety of softball drills (Hitting, Fielding, throwing) and speed/agility activities. (4) 75-minute sessions for committed softball players looking to enhance their skills and development for 2022 Spring/ Summer season. Sessions are led by professional trainers and coaches from In The Zone Training Facility and will focus on intermediate and advanced skill development appropriate for 10U, 12U and 14U players ages 8-14.

MSO 2022 Spring Recreation Softball: Registration opens January 3rd. Spring Recreation is divided by grade levels K-8 for players in Maplewood and South Orange. T-Ball for players in Kindergarten to 1st grade, Rookie for players in 2nd and 3rd grade, Juniors for players in 4th and 5th grade, and Seniors for players in 6th to 8th grade. Recreation softball is a great opportunity for beginner players to learn the basic techniques of softball and seasoned players

to continue to learn the game. Recreation softball allows each player an opportunity to have fun and play sports within their grade levels.

MSO 2022 Spring/ Summer Villagers tryouts 10U/12U/ 14U: Tryouts will be held mid- to late January. Pre-registration to open on January 3rd. Once teams are selected, teams will practice once a week over Feb/ March (at The Armory in West Orange). Spring/ Summer season will consist of 1-2 Spring tournaments, plus 3 tournaments and league play over the Summer. The season will wrap up around the end of July.

If you would like to register for any of the following classes, please visit our website at <https://maplewood.recdesk.com/Community/Program> or call the Recreation Department at (973)762-8120.

Sunny Days Ahead

Mark your calendars for 2022! The Early Bird Registration for Maplewood's Kids Camp and Pool are coming soon!



Featured Articles

Affordable Housing in Maplewood

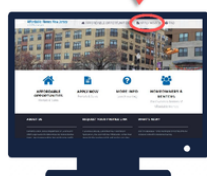
Looking for affordable housing opportunities in Maplewood? Visit our affordable housing partners at www.AffordableHomesNewJersey.com to complete a preliminary application, join the waitlist, and more!

AFFORDABLE HOUSING IN MAPLEWOOD TOWNSHIP

For information about affordable housing opportunities in Maplewood, please visit www.affordablehomesnewjersey.com.

On this website, you will be able to:

- Complete a preliminary application
- Join waiting lists
- Find out about other affordable housing opportunities
- Search our FAQ database
- Review income guidelines



www.AffordableHomesNewJersey.com

APPLY ONLINE TODAY!

If you have additional questions, please leave a detailed message at 609-664-2769 extension 5.



Affordable Homes New Jersey
a CGP&H service



Upcoming Senior Programming

The Maplewood Department of Community Services is hosting several upcoming senior events:

- **New Year's Eve Party** January 12 at the DeHart Community Center (DCC)
- **Trip to Newark Museum and Lunch at Ellie's Bistro** January 20
- **Valentine's Day Tea** February 9

- **Adult Acrylic Class** Experience required. Monday/Wednesday at DCC 10am-12pm. 8-week course begins in January.
- **Senior Fitness (65+)** All classes a \$30 for SOMA residents, \$48 for non-residents
- **Senior Aerobics with Melissa** Monday at DCC 9am-10am.
- **Senior Balance, Strength, & Stretch** Mixed level, low impact class. Monday/Tuesday at DCC 11am-12pm.
- **Zumba** Rhythm and dance with optional lightweight activities to get you moving and having fun. Tuesday/Thursday at DCC 9:30am-10:30am.
- **Senior Toning** Tuesday/Thursday at DCC 9am-10am.
- **Chair Yoga with Amy** A gentle form of yoga that is practiced while seated. Monday/Thursday at Maplewood Senior Center (MSS) 11am-12pm.
- **Group Meditation** One-hour meditation class to empower you to find a place of stillness and calm within. Wednesday at MSS 9:00am-10:00am.
- **Chair yoga with Robin** Tuesday/Thursday at DCC 11:00am- 12:00
- **Total Body Fitness** Designed for ages 40+. Tuesday/Friday at DCC from 10:00am-11:00am.

For more information on these events, contact the Maplewood Senior Center at (973) 763-0750.

Featured Articles



Upcoming Library Events

The Maplewood Library has a selection of upcoming events available for adults teens, and kids alike. Unless otherwise noted, all programs will be held online.

ADULT PROGRAMS

Books Now and Then Discussion Group

- January 14 at 7:00pm: *Stoner*
- February 10: *Harlem Shuffle*

G(r)ay Matter: Our Newest Book Group

Join us to discuss works by contemporary LGBTQIA+ and Two-Spirit authors in a variety of genres, including fiction, history, memoirs, poetry, science fiction, and graphic novels.

- January 4 at 7:00pm: *Poet Warrior*
- February 1 at 7:00pm: TBA

Read Around the World Book Group

- January 19 at 7:00pm: (Ecuador) *The Sisters of Alameda Street*
- February 16 at 7:00pm: (Mozambique) *Woman of the Ashes*

Job Search Strategy Fundamentals

Job search support meetings include seminars led by guest speakers or conducted by Career Coach Tony Calabrese. Network with friendly, helpful people from varied industries and backgrounds.

- January 11 & 25 at 10:00am
- February 8 & 22 at 10:00am

How to Master Your Medicare

For those new to Medicare and those already enrolled. Work with Nancy Schwartz, Independent Licensed Medicare Broker at Smart Senior Healthcare, to get the plan that matches your needs, preferences, and budget.

- Tuesday, February 15 at 7:00pm, Q&A session will follow.

TEEN PROGRAMS

Paying for College Without Going Broke

Parents and students will learn strategies for lowering their Expected Family Contribution, the new FAFSA rules, and tips for optimizing college admissions and scholarships.

- January 19 at 7:00pm

PSAT: Perfecting your Scores and Approach to Testing

This talk will cover what the report means and how it can help you, how PSAT scoring differs from that of the SAT, and tips/tricks.

- January 25 at 7:00pm

The Art of the Appeal

This workshop will provide detailed guidance for families on how to successfully appeal for more financial aid.

- March 9 at 7:00pm

CHILDREN'S PROGRAMS

Programs on Demand

Bring the Maplewood Library into your living room! Tune in to the playlist section of our YouTube channel for storytimes, DIYs, and special guests. New online programs are added regularly.

Featured Articles

Mental Health Resources

During these challenging times, many are in need of extra support. The Maplewood-South Orange Municipal Alliance has compiled a list of resources for those experiencing mental health issues. If you are experiencing any of the following, please reach out and know that you are not alone:

For support with a drinking or substance abuse problem, call:

- 844-276-2777 (IME Addictions Access Center hotline)
- 855-653-3737 (NJ Connect)
- 877-292-5588 (Peer Recovery Warmline)
- 844-732-2465 (Reach NJ)

For support with feelings of anxiety, anger, stress, or loneliness, call:

- 855-654-6735 (NJ Hope Line)
- 866-202-4357 (NJ Mental Health Care)
- 800-273-8255 (Suicide Prevention Line)

The NJ Department of Children and Families has also put together resources for youth:

If you need to vent, text 1-888-222-2228.

If you are being abused by an adult, call 1-877-652-2873

If you feel depressed or are in crisis, text NJ to 741741

If you feel like you might want to hurt yourself, call 1-855-654-6735

If there is domestic violence in your home, call 1-800-572-7233

Durand-Hedden House

The Durand-Hedden House and Garden Association is Maplewood's historic house museum, dedicated to creating engaging and informative educational programs and materials about the local history of Maplewood and surrounding communities, natural history, and other related topics. The House, located at 523 Ridgewood Road, is open once a month September-June.

On January 23, at 2:00pm, the House will be hosting "Backyard Birding 101" with Tedor Whitman, followed by a Q&A. Mr. Whitman is the Director of the Cora Hartshorn Arboretum and Bird Sanctuary in Short Hills. Doors open at 1:00pm for house viewing, enjoying Grasmere Park, and Country Store shopping. All guests must show proof of vaccination and wear a mask.



Additional upcoming events include "Open Hearth Cooking: Explore African American Foodways" on February 13 at 2:00pm and "Sojourner Truth: Suffragist and Abolitionist" on March 13.

For more information about the programs at Durand-Hedden House, please visit durandhedden.org or find them on Facebook at facebook.com/durandhedden.

COVID-19 Resources

Weekly Testing Clinic at CHS

The MediMobile testing clinic is onsite at the SOMSD Board of Education building every Wednesday and Saturday until further notice at zero out-of-pocket cost. For more information, please see the flyer below or visit bit.ly/C19Test_Vaccine.

WEEKLY COVID-19 ONSITE MOBILE TESTING CLINIC

The MediMobile testing clinic will be onsite @ the SOMSD Board of Education building every Saturday and on Wednesday's until further notice to provide COVID-19 testing services.

- PCR and Rapid (nasal swab) tests will all be available to anyone over 6 months old.
- There is NO out-of-pocket cost to anyone.
- Those with health insurance must bring proof of insurance and valid identification. Those without health insurance must bring valid identification and a form will be provided for you to complete.
- ***No appointments are required.**

ADDITIONAL TESTING DAY & UPDATED LOCATION

Days/Times: Saturdays, 9am to 3pm	NEW LOCATION: Board of Education Office (District Meeting Room) 525 Academy Street
Wednesdays, 4pm to 6pm	Board of Education Office (District Meeting Room) 525 Academy Street

TESTING IS OPEN TO ALL DISTRICT STAFF, STUDENTS, SOMA AND ESSEX COUNTY RESIDENTS

For updates on all upcoming onsite testing/vaccination opportunities at SOMSD visit: bit.ly/C19Test_Vaccine

Homebound Vaccinations

The Maplewood Health Department is offering in-home vaccinations for those who are homebound. Homebound individuals and their caretakers can schedule an appointment by calling (973) 309-4178 or by completing the survey listed at covid19.nj.gov/homeboundvax.

NJ Family Care

If you are uninsured, including if you recently lost your job-based health coverage, you may qualify for low-cost or free coverage through NJ Family Care.

NJ Family Care is comprehensive, affordable health insurance for individuals earning up to \$1,468 per month or a family of four earning up to \$3,013 per month. It covers doctor's visits, hospitalizations, prescriptions, mental health services, vaccines, and more. COVID-19 testing and treatment is covered at no cost.

Enrollment in NJ Family Care is open year-round. To check your eligibility, visit www.NJFamilyCare.org or call 1-800-701-0710 to speak with an enrollment specialist.

Excluded New Jerseyans Fund

The Excluded New Jerseyans Fund provides a one-time, direct cash benefit to eligible households who have suffered an economic hardship due to COVID-19 and were excluded from both the federal stimulus checks and COVID-related unemployment assistance.

Households with incomes up to \$55,000 may apply. This includes undocumented individuals, residents re-entering from the justice system, and any other individuals otherwise excluded. Benefits are up to \$1,000 for individuals and up to \$2,000 for households.

Applications are now available at nj.gov/humanservices/excludednjfund/.

COVID-19 Resources

COVID-19 Vaccines, Boosters, & Testing in Essex County

Essex County is offering COVID-19 vaccinations, booster shoots, and testing to anyone ages five and older who works, lives, or goes to school in Essex County. Services are available at Essex County College, the old K Mart building in West Orange, and the old Sears building in Livingston. All sites are open Monday through Saturday. Additional information can be found below.



"We encourage residents to help stop the spread of COVID-19 by getting vaccinated. Our comprehensive plan provides vaccinations centers that are convenient to all Essex County residents. Vaccines are safe and effective, and we encourage everyone to get vaccinated."
Joseph N. DiVincenzo, Jr.



**Joseph N. DiVincenzo, Jr., Essex County Executive
And the Board of County Commissioners**

Essex County COVID-19 Vaccination & Testing Locations

Essex County College, 177 West Market Street, Newark
Kmart Building, 236 Prospect Street, West Orange
Sears Building, 112 Eisenhower Parkway, Livingston
Vaccines for Ages 12 & Older: Monday to Saturday from 9 a.m. to 4 p.m.
Vaccines for Ages 5-11: Monday to Friday from 4-7 p.m.
& Saturday from 9 a.m. to 5 p.m.

Essex County residents & those who work or attend school in Essex County can get vaccinated at our sites.

Vaccines for Children Ages 5 to 11:

By appointment only. Visit [EssexCOVID.org](https://www.essexCOVID.org) or call 973-877-8456.

Pfizer: Appointments are needed to receive the vaccine for children ages 5-11. To make an appointment, visit [EssexCOVID.org](https://www.essexCOVID.org) or call 973-877-8456. This vaccine is given in two doses; when you make your appointment, you will be given an appointment 21 days later to receive your second dose. Children ages 5 to 11 must be accompanied by a parent or legal guardian.

Available Vaccines for People Ages 12 and Older:

Appointments not needed. If you want to make an appointment, visit [EssexCOVID.org](https://www.essexCOVID.org) or call 973-877-8456.

Moderna: People ages 18 and older are eligible to receive the Moderna vaccine. Moderna is given in two doses. When you receive your first dose, you will be given an appointment 28 days later to receive your second dose. It is important that you keep the second appointment.

J&J: People ages 18 and older are eligible to receive the J&J vaccine.

Pfizer: People ages 12 and older are eligible to receive the Pfizer vaccine. **Children ages 12 to 17 must be accompanied by a parent or legal guardian.** Pfizer is given in two doses. When you receive your first dose, you will be given an appointment 21 days later to receive your second dose. It is important that you keep the second appointment.

Booster Shots and 3rd Doses:

Appointments not needed. If you want to make an appointment, visit [EssexCOVID.org](https://www.essexCOVID.org) or call 973-877-8456.

Booster shots of Pfizer and Moderna are available to residents who have compromised immune systems (A person with a compromised immune system includes people who are fighting a disease, undergoing medical treatments or have received an organ transplant), seniors ages 65 and older and people ages 18 and older whose occupations or living conditions put them at risk of contracting COVID-19. You should wait at least 6 months before getting a booster shot or 3rd dose of Pfizer or Moderna.

Booster doses of J&J are available to anyone ages 18 years and older. You should wait at least two months before getting a J&J booster dose.

You may choose which vaccine you want as a booster or third dose.

There are no out-of-pocket costs to receive vaccines. Residents will be asked to provide their medical insurance information so Essex County bill the insurance company \$40 for each dose of the vaccine. If you do not have insurance, the cost of the vaccine will be covered by the Health Resources and Services Administration's Provider Relief Funds.

PUTTING ESSEX COUNTY'S HEALTH FIRST