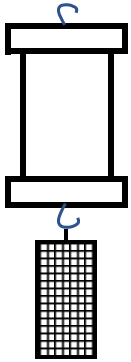


Squirrel proof bird feeder (for hanging from trees):



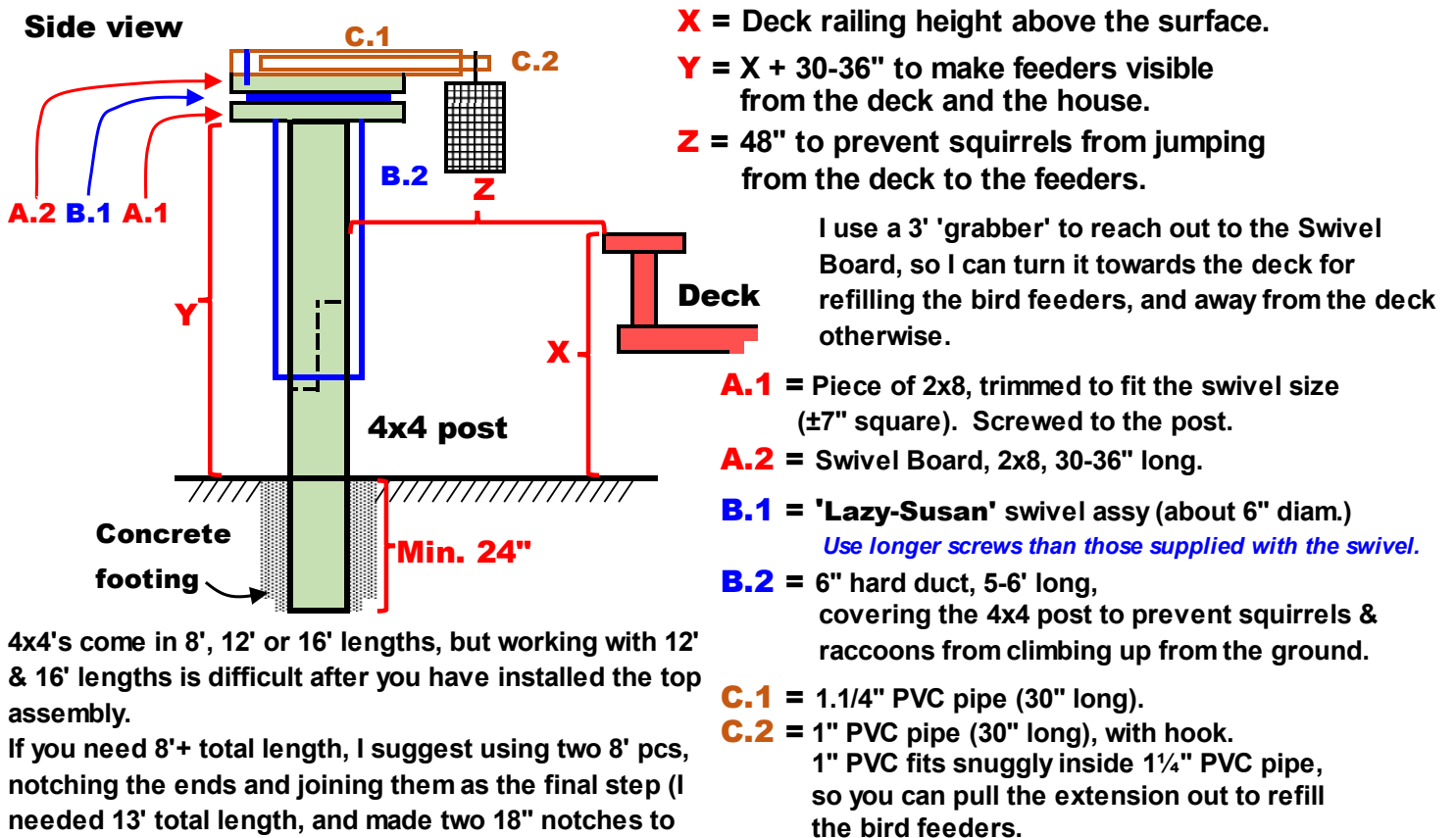
4" hard duct, 12-16" long, with a cap on either end (either solder, or use self-tapping screws to assemble).

Attach a hook through both caps prior to assembly, and hang from a branch, which **must be 3-4' away from other branches (to prevent squirrels from jumping across)**.

If the squirrels try to reach this bird feeder, they will slide off.

They might jump from the ground, so the feeder should be at least 4' off the ground!

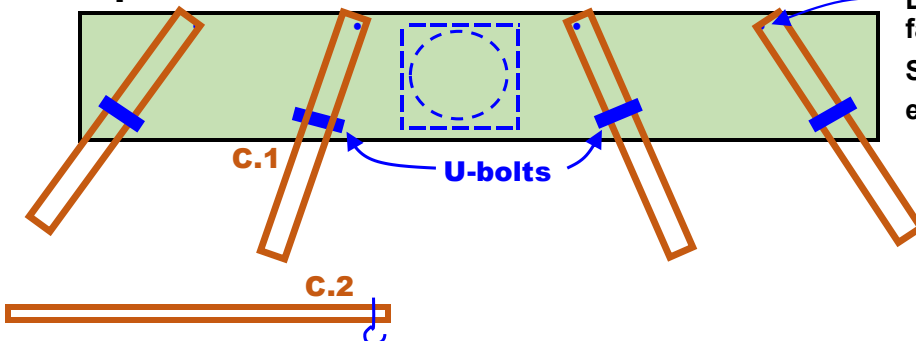
Free standing squirrel & raccoon proof bird feeder:



4x4's come in 8', 12' or 16' lengths, but working with 12' & 16' lengths is difficult after you have installed the top assembly.

If you need 8'+ total length, I suggest using two 8' pcs, notching the ends and joining them as the final step (I needed 13' total length, and made two 18" notches to assemble).

A.2 top view



Drill a hole in the end of **C.1**, and fasten to swivel board with a **screw**. Secure the position of the other end with a **U-bolt**.

4 feeding stations:

- Mixed seed
- Thistle seed
- Sunflower seed
- Suet cake.

Drill a hole, and insert a **hook** in the end of **C.2**
 Use **lock washers** to prevent nuts from unwinding.

Schematics are illustrations only (not to scale)



Squirrel & Raccoon Proof Bird Feeders

These are not the prettiest things you ever saw, but they are effective in preventing the squirrels & raccoons from raiding your bird feeders. Both designs are DIY for those who are reasonably handy.

For hanging from a branch, the bird feeder is suspended under a 12-16" long section of hard duct (galvanized = shiny metal). If a squirrel tries to climb down to the bird feeder, it slides off the duct. This device is effective, as long as the squirrels cannot jump up from the ground, or across from another branch. You need one for each bird feeder you want to hang.

Free Standing with 4 feeding stations (see photos) This bird feeder can be made up to 13-14' tall (for installation next to a raised deck). For optimal viewing of your feathered friends, it should extend 30-36" above the railing of your deck.

The top swivels, so it can be turned towards the deck for easy refilling of the feeders, and away from the deck for the birds to eat in privacy. You might need a garden 'grabber' to reach and turn the swivel top.

Please feel free to contact me, if you need assistance with your bird feeder project.

