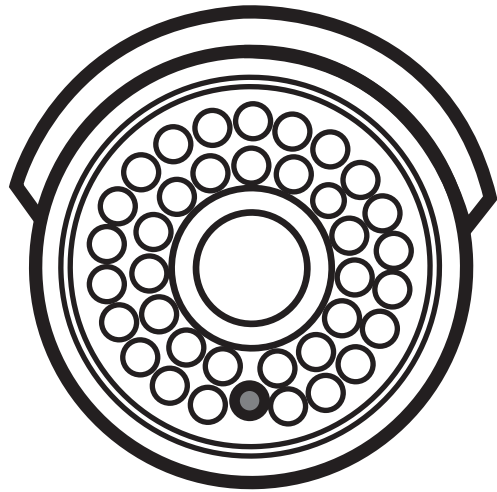


# User Manual



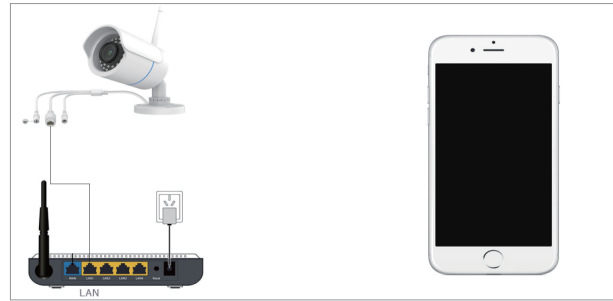
For more detailed Set up Manual, please refer to our website- [www.ieGeek.com](http://www.ieGeek.com) to download

## WiFi Camera Quick Start - Phone App User Manual

For more detailed Set up Manual, please refer to our website- [www.ieGeek.com](http://www.ieGeek.com) to download

### 1. Phone App - CamHI

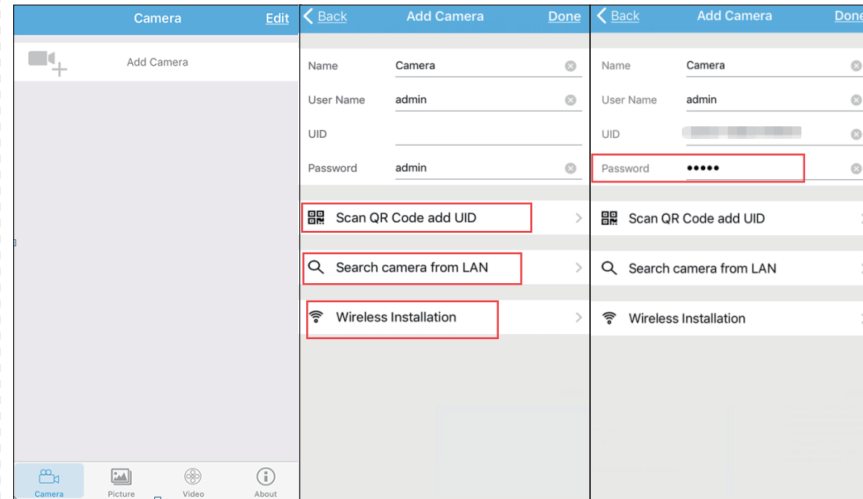
(Download app from App Store for Iphone, from Google Play for Andriod Phone)



① Have Camera powered

② Have Phone connected the same Lan Connect camera to Lan

(If your router provide both 2.4g and 5g network, please switch it to 2.4g only since our camera only support 2.4g network)

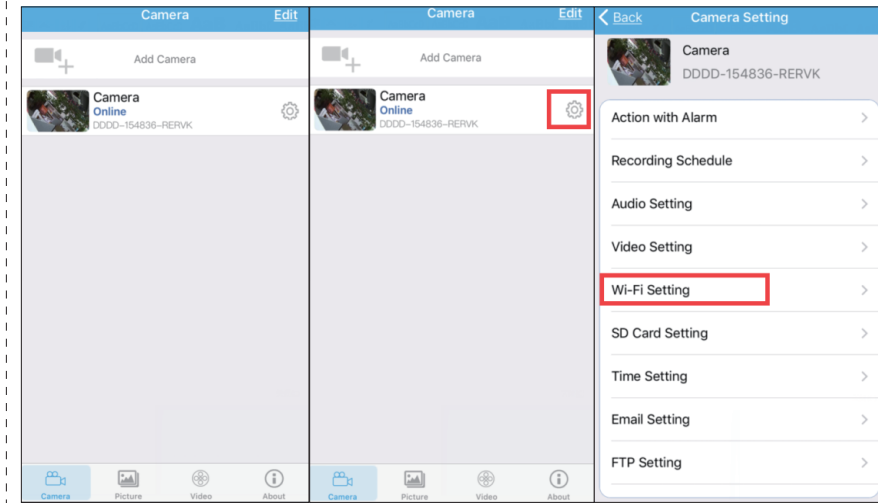


③

④

⑤

For more detailed Set up Manual, please refer to our website- [www.ieGeek.com](http://www.ieGeek.com) to download



⑥

⑦

⑧



⑨

- ③ Add Camera
- ④ Click Lan Search to search camera ID
- ⑤ Click camera ID and Input camera Password (Default: admin)
- ⑥ Camera added succeed
- ⑦ Click Setting Button
- ⑧ Go to Wifi setting
- ⑨ Input router password After camera online again, Wait for 30s, then disconnect the network cable, you can view camera wirelessly

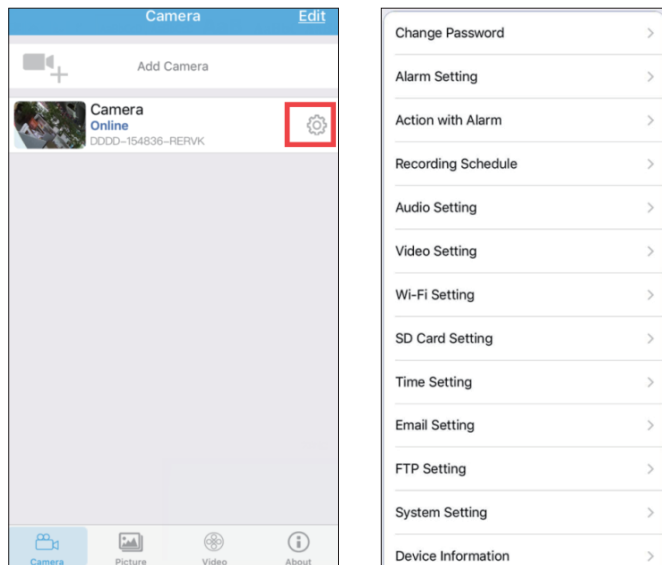
**Note:** If you can not set up wifi succeed:

- 1) Please check if your wifi Name and Password include Blank, & or other special characters.
- 2) Please check if your router provide WPA and WPA2 simultaneously, if yes, then the camera would not work out which protocol to work with, so please switch it to WPA2 only.
- 3) If you can not set up wifi succeed on Phone app, you can also try to set up on IE, If still any problems, please feel free to contact Customer Service: [service@iegeek.com](mailto:service@iegeek.com)

For more detailed Set up Manual, please refer to our website- [www.ieGeek.com](http://www.ieGeek.com) to download

## 2. Brief Instruction for More Options on Phone App

Click setting button to go to camera settings



**Change Password:** The user can modify the camera login password

**Alarm Setting:** Activate the motion detection alarm here(You can refer the separate Manual)

**Action with Alarm:** Set up motion detection alarm details here(You can refer the separate Manual)

**SD Card Setting:** Check the SD card status and format the SD card

**Timing Record:** Set up TF card recording here(Install a TF card first)

**Audio Setting:** Should no Audio for this camera

**Video Setting:** Camera video details

**Wi-Fi Setting:** Showing the wifi that your camera is connecting

**Time Setting:** Modify the camera time zone

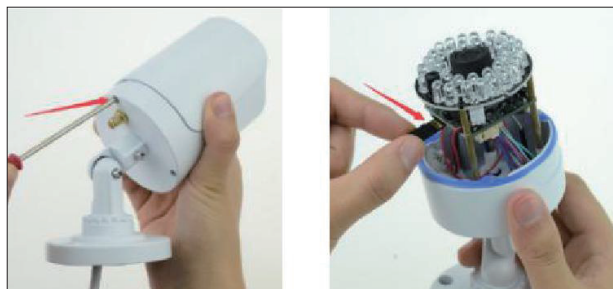
**Email Setting:** Set up motion detection with email notification here(You can refer the separate Manual)

**FTP Setting:** You can refer the separate Manual

**System Setting:** Restart camera and restore to factory settings here

## 3. Install Micro SD Card

Remove 3 screws and open the front cover.



### Note:

1. please make sure that the micro SD card you use is absolutely genuine class 10 card.
2. SanDisk is one of the brands of the Insert Micro SD Cards, which is specialized for the camera. If you use the SanDisk Micro SD card, please make sure that the card is specialized for security surveillance. (general SD card doesn't apply to this device)
3. Please format it before first use. (If Micro SD Card is formatted successfully, the capacity of Micro SD Card will appear, which means Micro SD Card is installed successfully.)
4. When inserted SD card, you can check whether there is the SD card on camera by APP on your mobiles.

### How to view TF card record files?

**Video:** Click "Online", click camera ID to check all the record files list, click the record files then you can view online